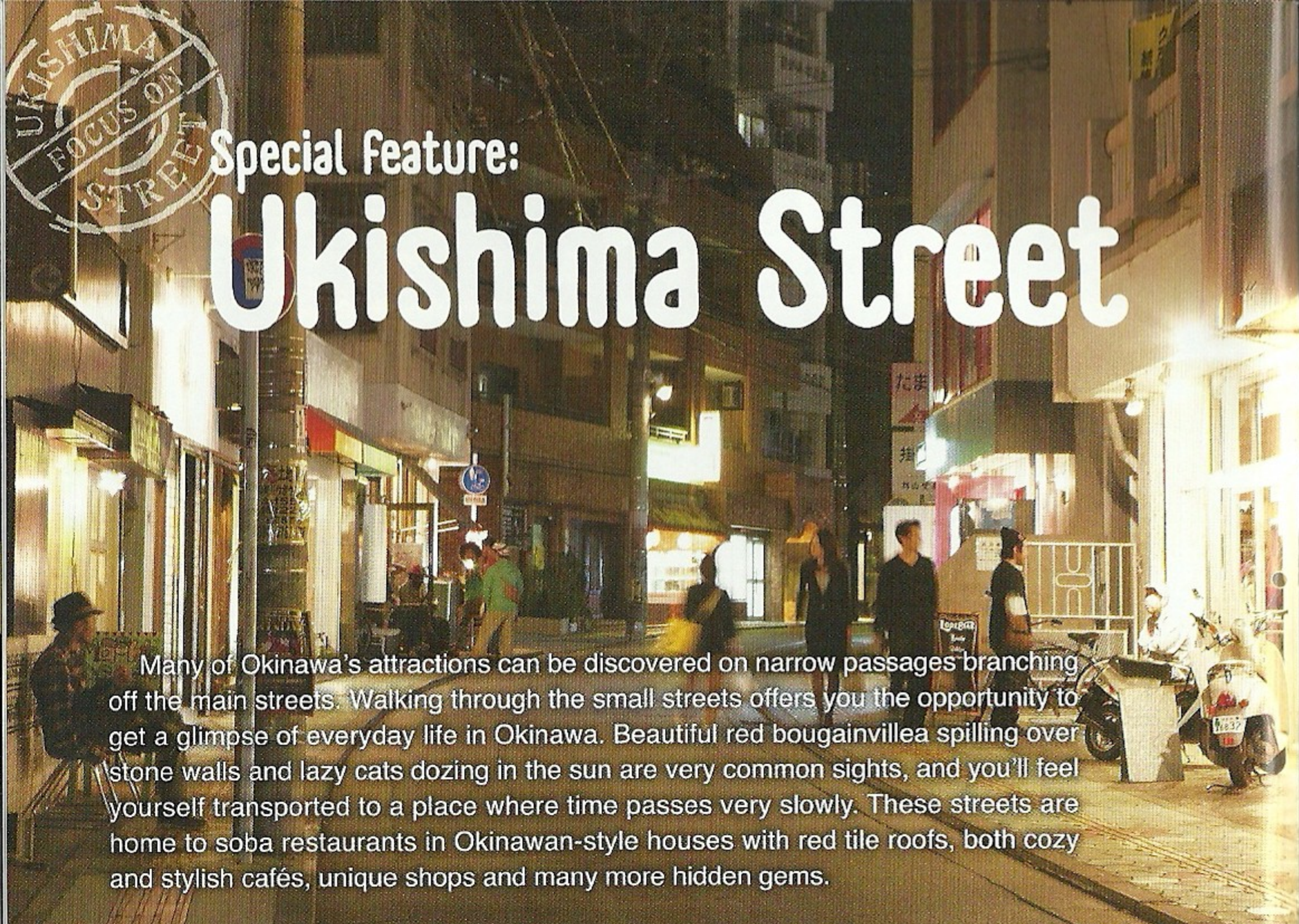


Special feature:

Ukishima Street



Many of Okinawa's attractions can be discovered on narrow passages branching off the main streets. Walking through the small streets offers you the opportunity to get a glimpse of everyday life in Okinawa. Beautiful red bougainvillea spilling over stone walls and lazy cats dozing in the sun are very common sights, and you'll feel yourself transported to a place where time passes very slowly. These streets are home to soba restaurants in Okinawan-style houses with red tile roofs, both cozy and stylish cafés, unique shops and many more hidden gems.

Photo provided by Naha Museum of History

Displayed at Kushiyaiki Ukishima, situated in a 50-year-old traditional Okinawan house, are nostalgic photographs of Ukishima's streetscape taken when the building was constructed.



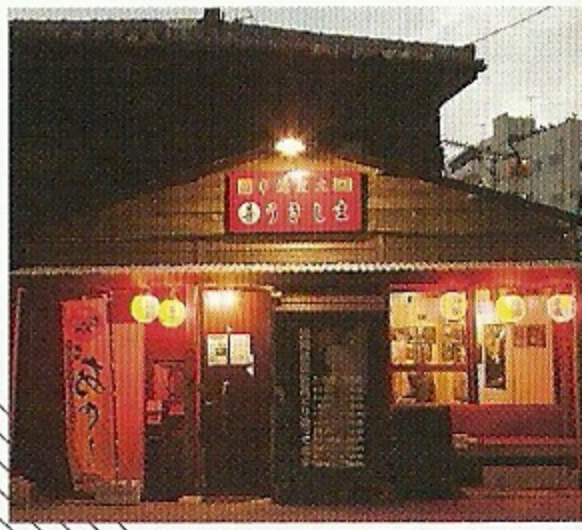
A Pinion Naha

All-organic products from Ishigaki Island are for sale at this sophisticated store. Friendly staff knowledgeable about the merchandise are always pleased to help as well as offer delicious samples for the tasting.
Hours: 10:00-21:00 / Open daily



B Kushiyaiki Ukishima

Skewered meat, starting at ¥80, is the main attraction at this izakaya. Photographs of Okinawa taken in the '60s exhibited on their walls show Okinawa's unique history. A special combo of two beers and several skewers is a good start for a long evening.
Hours: 16:00-1:00 / Closed: Thu **Credit cards**



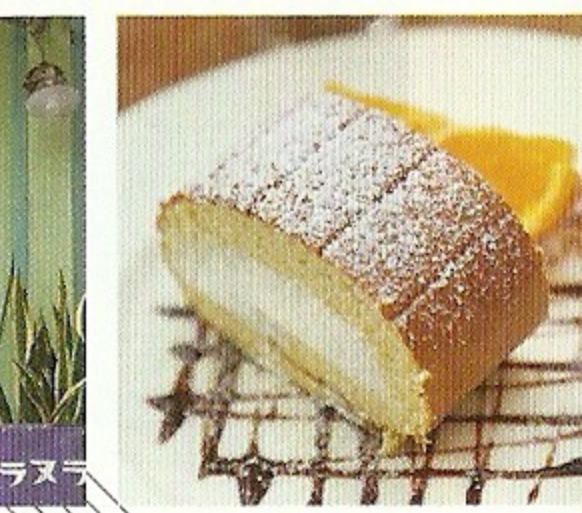
C Kashiwaya

Reasonable food and drink are available at this izakaya as well as comfortable rooms on the second and third floors. The special combo of the day for ¥600 yen is a favorite with customers.
Hours: 18:00-24:00 / Closed: Sun **English menu**



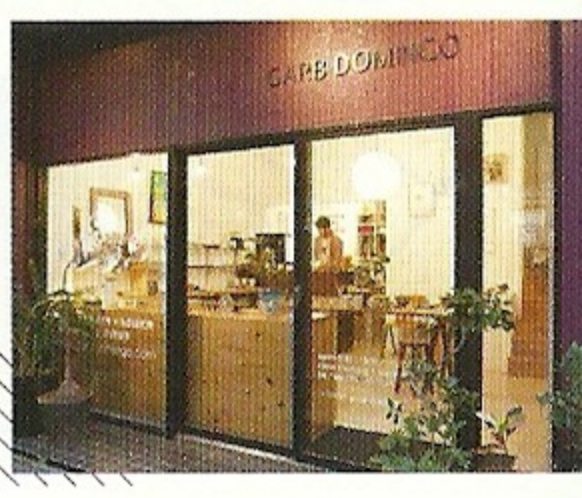
D Café Planura

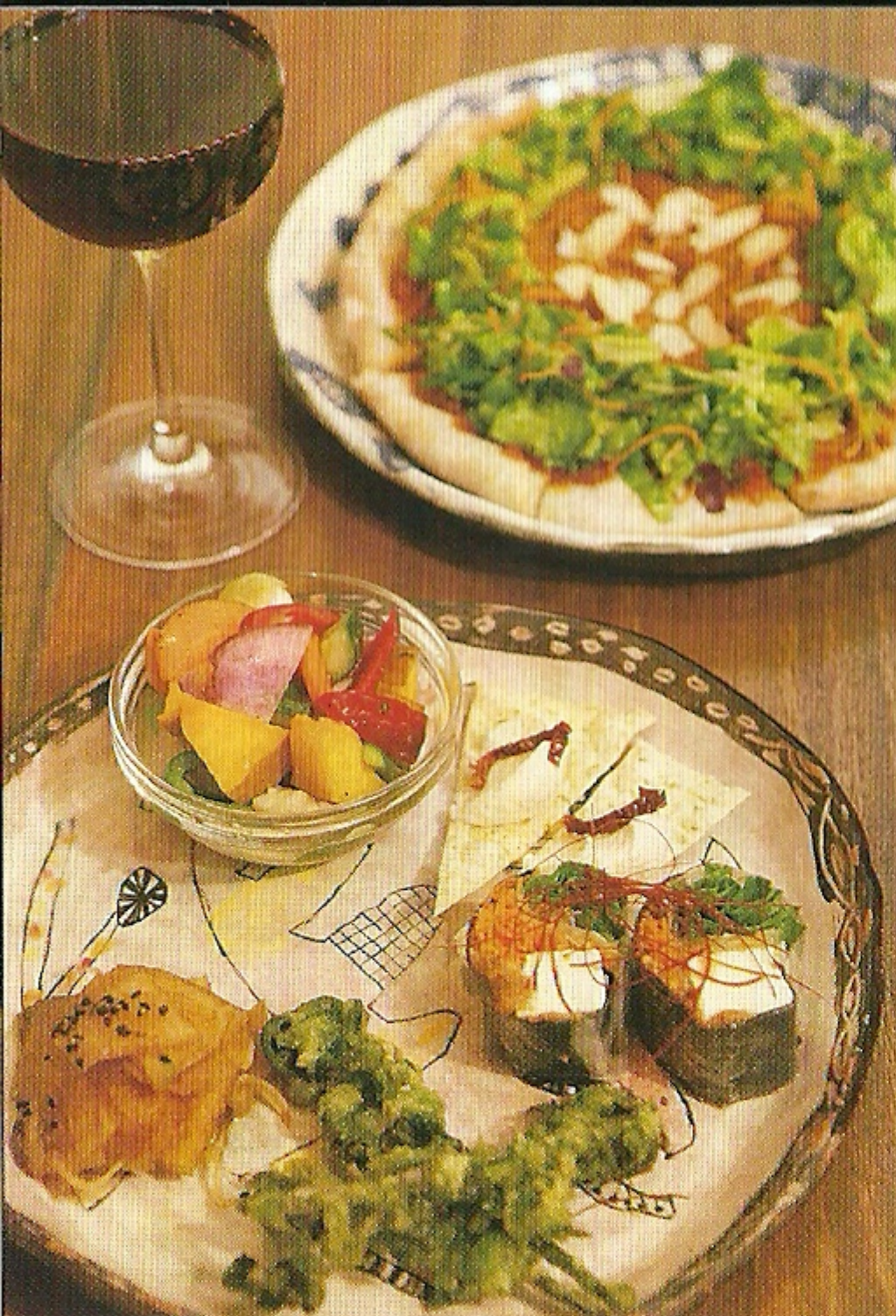
Providing homemade cakes, this is an oasis amidst the hustle and bustle of the city. Customers tend to linger in the café's relaxing atmosphere with a choice of over 20 specially selected teas.
Hours: Thu, Fri, Sat 13:00-22:00; Sat, Mon, Tue -21:00
Closed: Wed, 1st and 3rd Thu of month



E Garb Domingo

Pottery, lacquerware, bingata and other merchandise in traditional Okinawan patterns, all created by talented artists, can be found at this shop. Stylish tableware and stationery are available as well.
Hours: 9:30-13:00; 15:00-19:00 / Closed: Mon, Wed





Vegetarian plate (¥1,000) and taco pizza, which uses tofu and millet as a meat substitute (¥900). Prepared with special condiments and top-quality extra virgin olive oil, the food at Ukishima Garden boasts a deep flavor and rich taste that vegetarian dishes sometimes lack.

Ukishima Garden

Ukishima Garden serves exclusively vegetarian fare in a renovated 55-year-old Okinawan-style house. Here you can enjoy a variety of dishes based on the macrobiotic philosophy, with organic vegetables fresh from local farms. The menu includes pizza with soy cheese made with Okinawan tofu, Okinawan vegetable and millet hamburger, vegetable sushi and red and brown rice paella with squid ink. Ukishima Garden is open as a café during the day, while in the evening you can enjoy delectable dishes prepared with seasonal vegetables and sparkling organic wines selected by the owner and certified sommelier, Mr. Matsubara. This is a place where locals and tourists of all ages mingle to enjoy a laid-back evening with delicious food.



Viewing the garden while relaxing in the tatami room on the second floor, you may just forget that you are in the bustling city center of Naha.



Hours: Lunch 11:30-15:30; dinner 18:00-23:00
Open daily **Credit cards** **English menu**

P Jazzy 98

Their '60s-'70s vintage speaker and amplifier, originally used in a movie theater, play jazz in this comfortable café. This is the place to go for a relaxing afternoon.

Hours: 13:00-21:00 / Closed: Mon **\$** **Credit cards**



Kahu-si

At Kahu-si, you can enjoy a wide variety of wines, sparkling wines, Japanese sake and elaborate fare and snacks that pair very well with alcoholic beverages while listening to soothing jazz in a relaxing atmosphere. All the wines and sake found on Kahu-si's menu are carefully selected by the owner, Mr. Kinjo, a professional sake taster, and his wife, a certified wine sommelier. Originally this stylish, modern bar was designed exclusively for standing only, but now the place is equipped with high stools to provide customers with a more comfortable experience. Recommended wine and sake of the week can be ordered by the glass. In addition, they have an extensive wine list containing a large selection of wines from around the globe.

Hours: 19:00-24:00
Closed: Sun, 4th and 5th Mon of month
English menu

The friendly and cheerful shop owners, Mr. and Mrs. Kinjo.



During the autumn and winter months, when the temperature drops to a pleasant level, the massive windows remain open to give the place a wonderful open-air atmosphere.



With its excellent variety of drinks and snacks, from dry-cured ham and cheese to dried fish snacks, the most common accompaniment to Japanese sake, this wine and sake specialty bar satisfies even the most demanding sake connoisseurs from all around the island.

R Indo

Featuring a delicious curry made with 20 genuine Indian spices, Restaurant Indo, located slightly off Ukishima St., has long been a favorite with locals. Twenty-five different kinds of curry, bean curry for vegetarians and tandoor dishes are all on offer. A bowl of curry starts at ¥500, and in a set including salad, naan and a beverage, from ¥850.

Set meal with chicken and spinach curry (¥800). Kids meals are also available.



Hours:
Breakfast 7:00-9:00 (Mon-Sat);
lunch 11:30-17:00;
dinner 17:00-24:00
Open daily
English menu





F Mountain

This is a place to feel a Hawaiian breeze in Okinawa. Items such as aloha shirts, Hawaiian jewelry and vintage items from the islands are available.

Hours: 10:00-21:00; Sun -19:00
Closed: Thu



G Ryukyu Piras

This laid-back shop retails Okinawan-made items such as accessories, bags and T-shirts designed by various talented artists.

Hours: 11:00-20:00 / Open daily



H Mimuri

This shop and atelier are run by Okinawan textile designer and producer Mimuri. Sundry goods, bags and more, specially designed by the gifted artist, are all available here.

Hours: 13:00-19:00
Closed irregularly

Branching off Kokusai Street at its midpoint and running all the way to Kanzatobaru Street, Ukishima Street is a narrow 500-meter-long street lined with a number of unique shops, restaurants, cafés and bars. This is also a popular spot for brand-name merchandise such as Paul Smith as well as made-in-Okinawa fashion, used clothing and miscellaneous items.



R Indo

The Matsuo area, where the public market is located, is said to have taken the first initiative in postwar rehabilitation.



← R58



I Vaice

This select shop features unique pottery as well as fashionable clothes, mainly by well-known brand name Kapital.

Hours: 13:00-20:00
Closed: Wed



J Sweets Shop U&A

The shop specializes in dorayaki, Japanese pancakes with jam, except that here rice cakes, cream and cheese are put between two small pancakes instead of jam. Their original scones are also well liked by customers.

Hours: 11:00-19:00 / Closed: Mon
English menu



K Miyagiya-bluespot

A purveyor of stylish men's and unisex clothing from Seoul, this select shop is also a haven for lovers of Okinawan pottery, contemporary but with a taste of the Ryukyu Kingdom, as well as smart household items.

Hours: 11:00-20:00
Closed: Wed, other irregular days



L Kuku

Rice bowls including katsudon (with pork cutlet) and oyakodon (with chicken and egg), made with a special Japanese soup stock, are available at low prices.

Hours: 11:00-20:00 / Closed irregularly
English menu



M Nanto Seika

In business since 1935, this shop sells traditional Okinawan sweets at reasonable prices. Konpen, dating to the days of the Ryukyu Kingdom and made from brown sugar and sesame, is on offer, starting at ¥60.

Hours: 9:00-19:00 / Closed: Jan 1, 2



N Zii-circus

With its beautiful traditional Okinawan roof, this general store offers various miscellaneous goods. Items like Fire King mugs, rubber stamps and more are of note.

Hours: 11:00-20:00
Closed: Mon

Entrance to the one-way section of Ukishima Street. The street is perfect for a leisurely stroll and window shopping.

Tree-lined stretch of street.

Go straight to get to the Makishi Public Market.

With the old-fashioned shop signs and buildings, the street preserves the townscape of the old days.