

WELCOME  
TO  
TAKOYAMA HABU CENTER

? date: some time between 1986-90



ClickOkinawa.com 2018

- ADDRESS 1130 YAMADA ONNASON  
OKINAWA, JAPAN  
TEL (098964) 3184 · 3411



## WELCOME TO TAKOYAMA HABU CENTER

We are proud to present to you the famous fight to the death between the Habu and the Mongoose.

First let me give you a brief background on these two stars of our show.

A HABU is one of the wild animals with fatal poison. The HABU inhabits a limited territory in Taiwan, Okinawa and Amami Oshima. It is reported that the snake is classified in over 2,700 kinds and almost 200 snakes are poison and the HABU is ranked as one of the most poisonous.

The HABU hibernates in November through February in stone fences, old graves or under ground. In the month of March, when the temperature rises around 22 degrees Celsius, The HABU awakes from its hibernation and comes out to the farming yard or grounds. The HABU'S rutting season is in March through April and it is said that the HABU makes its mating for 24 hours or more, it is enviable affair, isn't?

The HABU'S spawning season is in the months of August through September and spawn 7 to 13 eggs.

As it is well known that the HABU is a vigorous animal, it is occasionally used as a vigorous drink and for medicinal purposes. In TAKO-YAMA HABU CENTER, we have powdered the HABU for sell. In the restaurant, we have the HABU Sukiyaki dish, why don't you try it?

The MONGOOSE, is one of several general and numerous species



of small carnivores of the subfamily Herpestinae. Inhabiting Africa, southern Asia, the East Indies, and Spain, mongooses are long-bodied, long-tailed, grayish or brownish animals ranging in size from 18 inches to 50 inches in length, including the tail. They feed on a variety of small mammals, ground-nesting birds, eggs, crayfish and snakes.

The HABU is a favorite food of the MONGOOSE. In hunting snakes, the MONGOOSES rely on their agility to dodge the snakes' strikes; also, by fluffing up their fur, they cause the snakes to misjudge striking distances.

About 70 years ago, the MONGOOSE was introduced into Okinawa from India for the purpose of hunting the HABU'S and a great deal of the MONGOOSES are now inhabiting Okinawa. Now, we start the big duel of the HABU vs the MONGOOSE, the duel probably will result in a moment of an offense and defense battle.

One (1) gram of the HABU'S venom is able to kill over 1000 rabbits. If a HABU bites on upper part of his body, he perhaps will lose his life. In case a man bitten by the HABU on his hand or foot, he probably will die or become deformed a person, unless he receives a serum injection within one hour.

When the HABU attacks the MONGOOSE first, the MONGOOSE will be convulsed and will die in 5 or 10 minutes.

The MONGOOSE takes aim at the HABU'S head and will attempt to smash its eyes and pull out the poisonous teeth, break the pate and will eat the HABU gradually.

Enjoy the big duel of the HABU vs the MONGOOSE!!



Inside the park you'll find a small zoo of various feathered friends, peacock and peahen cages, an alligator pond, heyley pond, bat and monkey cages, snake pits and cages of mongooses. Added attractions are two sugar cane mills of the past; one water-driven and the other powered by a water buffalo. The squeezed out juice from the cane is made into the popular Okinawa brown sugar candy, which is available for purchase at very reasonable prices.

## HABU-KO (GENUINE SNAKE POWDER)

The Habu is one of the deadliest snakes found in the Ryukyu Islands. Its meat, however, is famous for giving vitality and energy to men and women. The Habu can survive without nourishment for 2 years. The snakes are capable of copulating continuously for up to 24 hours. Hence, Habu meat has been used as stimulants as well as food to enhance physical activity. Habu-ko may also be dissolved in your soup or other dishes. A daily dosage is recommended for maximum effect.

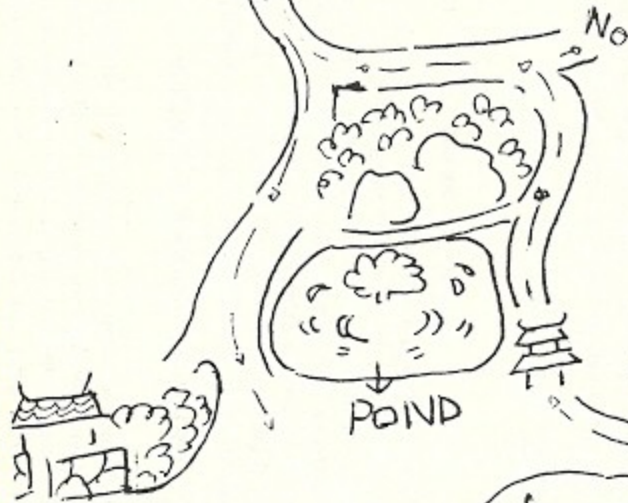
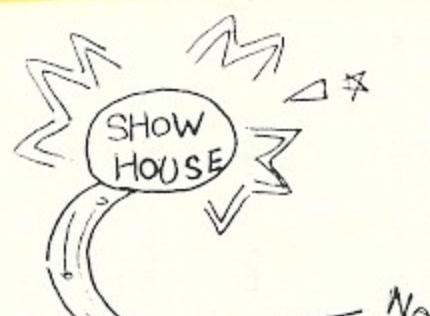
20g    ¥2,000                      70g    ¥6,000                      130g    ¥10,000

## HABU SAKE (Habu Sake Liqueur)

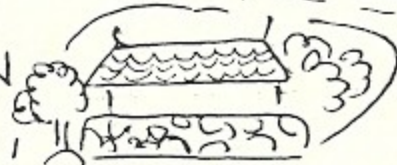
Okinawa's traditional Habu Sake is one of the finest liqueurs made from Awamori (Okinawan rice wine) and real extract from our Takoyama Habu, famous for giving energy any vitality. Try Habu Sake on the rocks or mixed with a fruit juice or just plain water. It's mild!

360ml btl    ¥1,300





GARDEN



HORSE

ENTRANCE

NAKASONEKE

